

**KVR800D2S6K2/2G**

**2GB (1GB 128M x 64-Bit x 2 pcs.) DDR2-800**

**CL6 200-Pin SODIMM Kit**

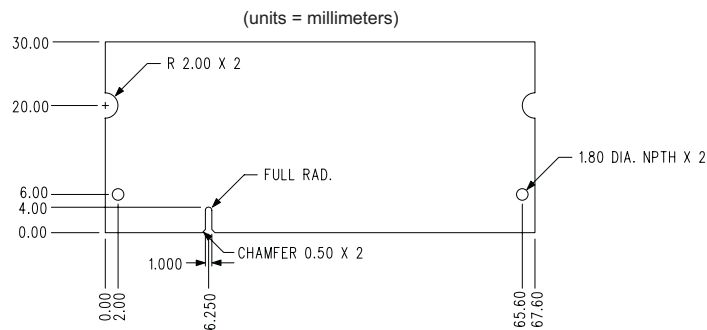
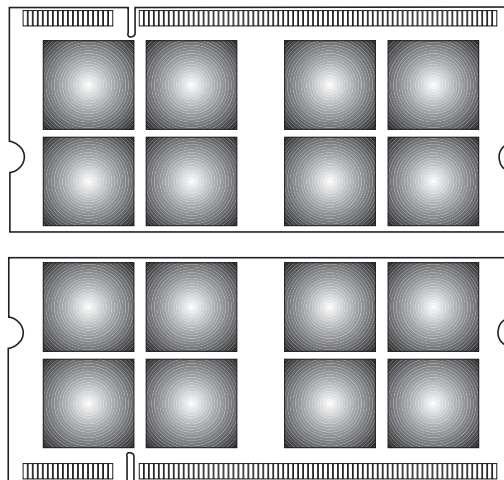
**DESCRIPTION:**

ValueRAM's KVR800D2S6K2/2G is a kit of two 128M x 64-bit 1GB (1024MB) DDR2-800 CL6 SDRAM (Synchronous **DRAM**) memory modules. Total kit capacity is 2GB (2048MB). The components on each module include sixteen 64M x 8-bit DDR2-800 SDRAM in FBGA packages. Each 200-pin SODIMM uses gold contact fingers and requires +1.8V. The electrical and mechanical specifications are as follows:

**FEATURES:**

☑ Clock Cycle Time (tCK) CL=6	2.5ns (min.) / 8ns (max.)
☑ Row Cycle Time (tRC)	60ns (min.)
☑ Refresh to Active/Refresh Command Time (tRFC)	105ns
☑ Row Active Time (tRAS)	45ns (min.) / 70,000ns (max.)
☑ Single Power Supply of	+1.8V (+/- .1V)
☑ Power	1.800 W (operating per module)
☑ UL Rating	94 V - 0

**Note:** The module defined in this data sheet is one of several configurations available under this part number. While all configurations are compatible, the DRAM combination and/or the module height may vary from what is described here. However, in no configuration will the module height exceed 30mm.



**Figure 1: KVR800D2S6K2/2G 200-Pin SODIMM**